



Gilford Solid Waste Center

Recycling List



CARDBOARD



PLASTICS (#1, #2, #5 & #7)



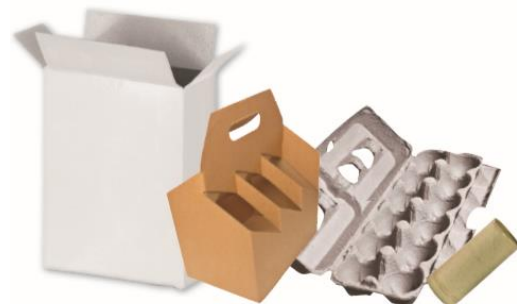
STEEL/TIN CANS



GLASS



ALUMINUM CANS



MIXED PAPER



Gilford Solid Waste Center

Separating Recyclables

MATERIAL	CAN INCLUDE	DO NOT INCLUDE	NOTES
Cardboard	All corrugated cardboard (incl. clean pizza boxes)	NO waxed boxes, messy pizza boxes or plastic film packaging	Please flatten Tape OK Shiny finish OK
Mixed Paper	Junk mail, magazines, egg cartons, newspaper, food/cereal boxes, office/school paper, phone books, shredded paper, paperbacks	NO paper towels, tissues, napkins NO corrugated cardboard or waxed boxes(milk/juice cartons or beer/soda boxes)	Staples, paper clips and window envelopes are OK!
Plastics	#1, #2, #5, and #7 Plastic bottles, jars, tubs and containers only	NO caps, plastic bags, plastic film, styrofoam, bubble wrap, straws, or BLACK plastic	Please remove caps Empty food & rinse Look for ♻️ symbol
Steel/Tin Cans	Soup, food, coffee cans	NO paint and aerosol cans	Please rinse Labels OK Sticks to a magnet
Aluminum Cans	Beverage cans	NO aluminum foil, pie plates or pet food cans	Please rinse Labels OK Will not stick to a magnet
Glass	Glass bottles and jars	NO porcelain sinks & toilets, light bulbs, headlights or windshields.	See attendant for special instructions on items in NO column

GILFORD RECYCLE CENTER

100 Recycle Way, Gilford NH 03249

OPEN Tues – Saturday, 8am – 3:45pm

WEBSITE: www.gilfordnh.org/recycleright

EMAIL: recycle@gilfordnh.org

PHONE: 293-0220

RECYCLABLES MUST BE SEPARATED BEFORE COMING TO GSWC

*** Please contact DPW with any questions on what is recyclable in the Town of Gilford. Remember **“When in Doubt. Throw it Out.”** Contamination in the recycle stream effects market value of loads. Thank you for your cooperation!*



Gilford Solid Waste Center

Household Trash



**PLASTIC WRAP,
FILMS OR TARPS**



**DIRTY RECYCLING
OR LIQUIDS**



**COATED PAPER
ITEMS**



**DISHES OR BAKING
GLASS**



DISPOSABLE ITEMS



PLASTIC BAGS



FOOD WASTE



**ASEPTIC/WAX COATED
CONTAINERS**



**CHIP BAGS, FOOD
WRAPPERS**



Gilford Solid Waste Center

Household Trash

CAN INCLUDE	DO NOT INCLUDE
<ul style="list-style-type: none"> ✓ Chip bags, food wrappers (e.g. granola bars) ✓ Coated paper items ✓ Dirty recycling or liquids (messy pizza boxes, cups with liquid still in them) ✓ Dishes or baking glass ✓ Disposable items (napkins, paper towels, tissues, plastic silverware) ✓ Food waste ✓ Juice pouches ✓ Plastic wrap, shrink wrap, plastic films or tarps ✓ Plastic toys, ✓ Plastic bags, caps, lids ✓ Rags, fabrics, pillows ✓ Wax coated containers (such as juice or milk cartons) ✓ BLACK plastic 	<ul style="list-style-type: none"> ✗ Yard Waste ✗ Household Hazardous Waste (HHW): Automotive products & fuels, cleaners, pesticides, fluorescent bulbs, batteries, pool chemicals, mercury thermometers ✗ Tires ✗ Construction and demo debris ✗ Mattresses & box springs ✗ Furniture & carpets ✗ Appliances <p><u>THINGS THAT ARE RECYCLABLE:</u></p> <ul style="list-style-type: none"> ✗ Aluminum Cans ✗ Cardboard ✗ Glass ✗ Mixed Paper ✗ Plastics (#1, #2, #5 & #7) ✗ Steel/Tin Cans

GILFORD RECYCLE CENTER

100 Recycle Way, Gilford NH 03249

OPEN Tues – Saturday, 8am – 3:45pm

WEBSITE: www.gilfordnh.org/recycleright

EMAIL: recycle@gilfordnh.org

PHONE: 293-0220

*** Many items not allowed in the household trash are accepted at the Gilford Recycle Center for a fee. Please see fee schedule on the website for more info.*

GILFORD SOLID WASTE CENTER
APPENDIX B
FEE SCHEDULE
EFFECTIVE JANUARY 1, 2020

CONSTRUCTION DEMOLITION & DEBRIS

- | | |
|----------------------------|---------------------|
| • ROOF SHINGLES | \$50.00 PER SQ YARD |
| • FURNITURE | \$/LOAD TBD ON SITE |
| • DEMO | \$/LOAD TBD ON SITE |
| • CARPETS & PADS | \$10.00 PER UNIT |
| • MATTRESSES & BOX SPRINGS | \$/LOAD TBD ON SITE |
| • OTHER BULKY ITEMS | OR \$10.00 PER UNIT |

TIRES

- | | |
|---|-------------|
| • SMALL (UNDER 20" WITH OR WITHOUT RIM) | \$3.00 EACH |
| • LARGE (20" OR MORE WITH OR WITHOUT RIM) | \$5.00 EACH |
| • RIMS (ALL SIZES) | NO CHARGE |

ELECTRONICS

- | | |
|---|--------------|
| • SMALL (UNDER 30" MEASURED ON LONGEST SURFACE) | \$5.00 EACH |
| • LARGE (30" OR MORE) | \$10.00 EACH |

METAL PRODUCTS

- | | |
|---|------------------|
| • APPLIANCES WITH REFRIGERANT | \$10.00 PER UNIT |
| • APPLIANCES WITHOUT REFRIGERANT | NO CHARGE |
| • OTHER BULKY METALS | NO CHARGE |
| • PROPANE TANKS (WITH OR WITHOUT VALVE) | NO CHARGE |

YARD WASTE

- | | |
|--|------------------------------------|
| • STUMPS | \$10.00 PER UNIT or \$120 PER LOAD |
| • CONCRETE W/REBAR | \$25.00 PER SQ YARD |
| • CONCRETE WITHOUT REBAR | NO CHARGE |
| • LOGS (MUST BE UNDER 6" DIAMETER AND 6' LENGTH) | NO CHARGE |
| • ASPHALT | NO CHARGE |
| • BRUSH, LEAVES, GRASS CLIPPINGS | NO CHARGE |

SPECIAL PRODUCTS

- | | |
|-----------------------------------|-----------|
| • FLORESCENT LIGHT BULBS | NO CHARGE |
| • THERMOSTATS WITH MERCURY | NO CHARGE |
| • BATTERIES | NO CHARGE |
| • WASTE OIL (BRING TO DPW GARAGE) | NO CHARGE |

HOUSEHOLD TRASH – RESIDENTIAL ONLY

- | | |
|---|-----------|
| • MUST BE IN BAGS/BARRELS WITHOUT RECYCLABLES | NO CHARGE |
|---|-----------|

RECYCLABLES

- | | |
|--|-----------|
| • CLEAN, NO CAPS, SEPARATED BY TYPE | NO CHARGE |
| • PLASTICS #1, #2, #5 & #7 ONLY | |
| • METAL CANS, ALUMINUM CANS, GLASS BOTTLES, CORRUGATED CARDBOARD | |
| • PAPER – NEWSPRINT, OFFICE PAPER, FOOD & BEVERAGE CONTAINERS, MAGAZINES, ETC. | |

TOWN STAFF IS HERE TO ASSIST AND TO HELP ANSWER ANY QUESTIONS
ALL LOADS SUBJECT TO INSPECTION